



When it is important to have a full micro CT-System on a limited space - the benchtop-systems of PXR are the right choice! Our systems are custom build to the needs of your application. This optimisation grants the best performance to minimum cost.

The CT-COMPACT is equipped with a 130 kV X-Ray-Source and a 15 x 12 cml Flat-Panel-Detector in its basic version. It is able to pick up large samples up to 200 mm in diameter and 200 mm in height. With the usage of light materials we made it to reduce its weight to 400 kg which allows the usage in every laboratory without the need of heavy load floors.

The CT-COMPACT can be customized in any detail, e.g. to pick-up larger specimen or give room for different detectors with higher number of pixel.

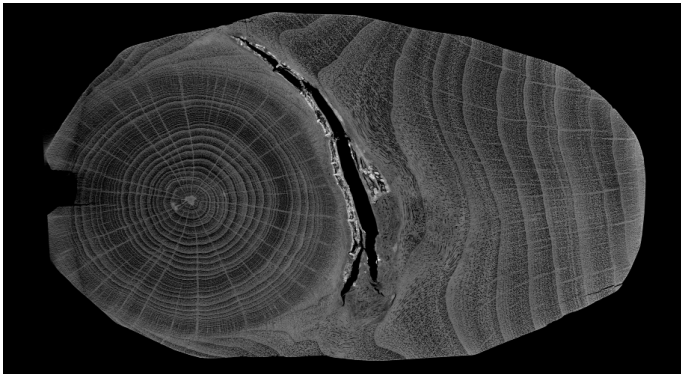
The CT-COMPACT offers all options of the larger floorstand-models like Axial-Scans, Fast-CT, horizontal Measurement-Field-Extension, vertical Measurement-Field-Extension, Helix-CT, or many more.

The 130 kV X-Ray-Source has a maximum power of 39 Watt and the minimum focal spot can be less than 5  $\mu\text{m}$ , which allows to resolve features smaller than 3  $\mu\text{m}$ . The combination with a large Flat-Panel-Detector allows to scan large object in a very short time.

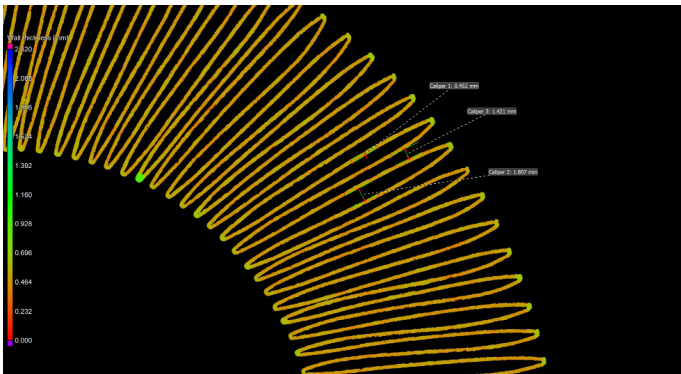
Like all benchtop systems, the CT-COMPACT is ideal for non-destructive testing, materials analysis, metrology, rapid prototyping and many more.

## Features

- ▶ Industrial X-ray Computed Tomography (CT)
- ▶ 3D volume CT
- ▶ Non-destructive testing (NDT) – 2D and 3D
- ▶ Quality control independent of material
- ▶ Defect recognition (voids, cracks, ...)
- ▶ Contactless metrology
- ▶ Fast CT reconstruction
- ▶ Artefact reduction
- ▶ Easy operation & low maintenance needs
- ▶ Radiation safety better than 1  $\mu\text{Sv/h}$



archaeological wood-tool



wall-thickness-analysis of air-intake-filter

## Specifications

X-ray Source 0 - 130 kV  
up to 39 W  
5  $\mu\text{m}$  min. Focal Spot

*Other sources possible on request up to 180 kV*

Detector 3 Megapixel  
75  $\mu\text{m}$  pixel size  
1944 x 1536 pixel

*Many other detectors available on request*

Spatial Resolution < 3  $\mu\text{m}$   
Voxel size < 3  $\mu\text{m}$   
Max. Object size  $\varnothing$  200 x H 200 mm  
Max. Scan size  $\varnothing$  120 x H 100 mm

*Larger working space available on request*

System Dimensions 1100 x 540 x 800 mm  
(W x D x H)  
System weight 500 kg (including table)  
Cabinet weight < 400 kg  
Power supply 100 - 240 VAC, 50/60 Hz



metal printed epicyclic gearing